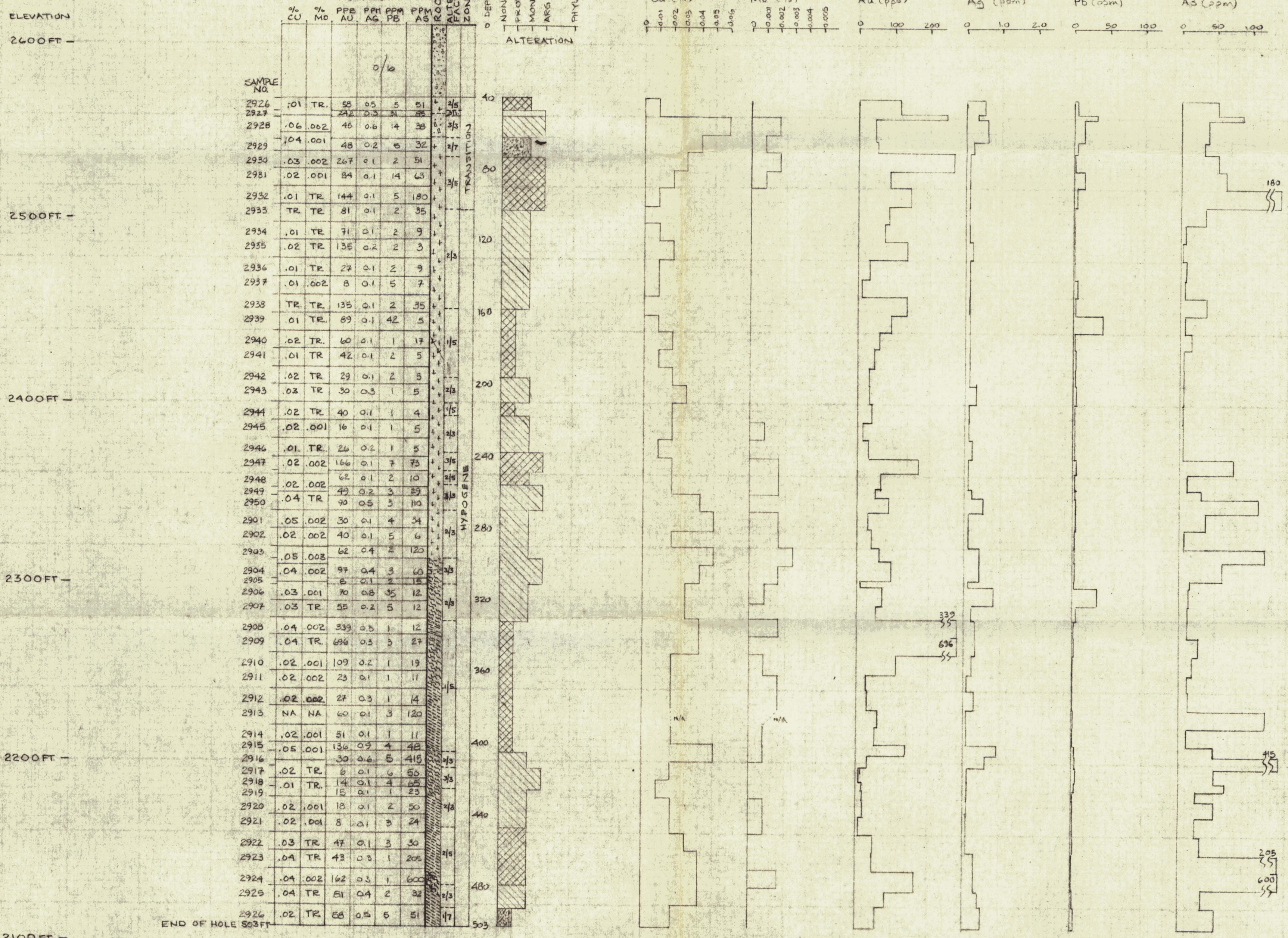


NUCLEUS CLAIMS  
KAISER 1970  
HOLE D70-6-90

WEAK MOD  
LOW MOD-HIGH



GEOLOGICAL LEGEND

- RECENT
- GLACIAL TILL & WEATHERED BEDROCK
- UPPER CRETACEOUS & TERTIARY (50-70 MA)
- QUARTZ-FELDSPAR PORPHYRY - FINE-GRAINED QUARTZ & FELDSPAR PHENOCRYSTS IN A MICROCRYSTALLINE MATRIX
- ANDESITE - DARK GREEN APHANTIC, RARE QUARTZ, FELDSPAR PHENOCRYSTS
- MID-CRETACEOUS (90 MA)
- QUARTZ MONZONITE - MEDIUM GREEN, EQUIGRANULAR - RARELY GNEISSIC TEXTURE, UP TO 15% BIOTITE AND HORNBLende
- PALEOZOIC? (UPPER DEVONIAN & MISSISSIPPIAN)
- YUKON CRYSTALLINE TERRANE (ALLOCHTHONOUS)
- SCHIST GNEISS UNIT
- QUARTZITE - SCHISTOSE, VARIABLE AMOUNTS OF CHLORITE, BIOTITE AND FELDSPAR, GRADES INTO GNEISS BELOW
- GNEISS - QUARTZ, FELDSPAR
- BRECCIATED
- ASSAY RESULTS FROM KAISER 1970 DRILL LOGS

FIGURE N209

ARCHER, CATRO & ASSOCIATES (1981) LTD.

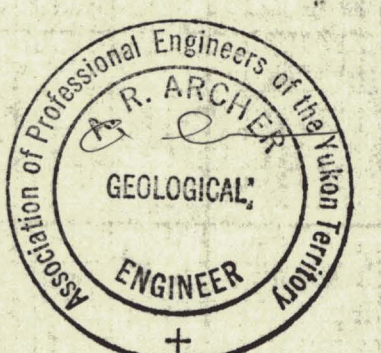
HOLE D70-6 GEOCHEMISTRY

NUCLEUS PROPERTY

NAT JOINT VENTURE

VERTICAL SCALE 1:480

0 20 40 60 80 100 120 FEET



090913